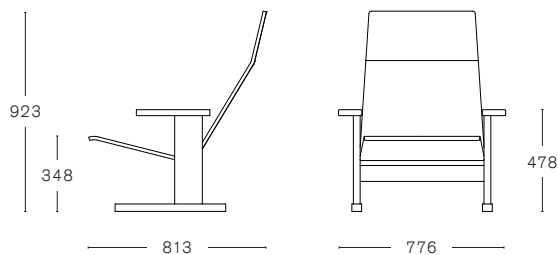


QUINDICI

design by RONAN & ERWAN BOUROULLEC



TECHNICAL INFORMATION

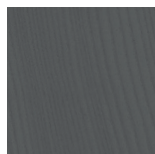
MAX. PER BOX	GROSS WEIGHT	VOLUME	BOX SIZE
1 CHAIR	CA. kg 24,00	0,765 m ³	900 x 850 x 1000 mm

FINISHINGS

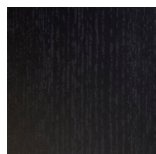
ASH



NATURAL



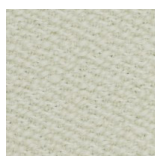
GREY



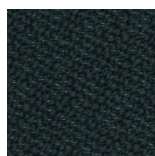
BLACK

FABRIC UPHOLSTERY

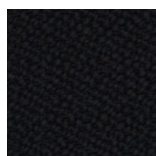
VIDAR 2



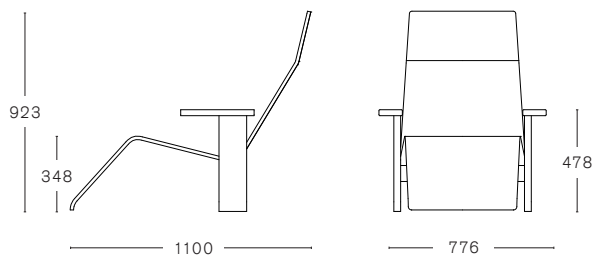
1511



1062



1880



TECHNICAL INFORMATIONS

MAX. PER BOX	GROSS WEIGHT	VOLUME	BOX SIZE
1 CHAIR	CA. kg 25,00	1,02 m ³	1200 x 850 x 1000 mm

FINISHINGS

ASH



FABRIC UPHOLSTERY

VIDAR 2

