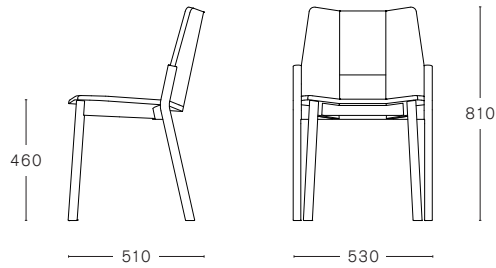


TRONCO CHAIR

design by **SAM HECHT / INDUSTRIAL FACILITY**



TECHNICAL INFORMATIONS

STACKABLE

STACKABLE ON DOLLY

MAX. PER BOX
2 CHAIRS

GROSS WEIGHT
CA. kg 15,00

VOLUME
0,32 m³

BOX SIZE
620 x 560 x 920 mm

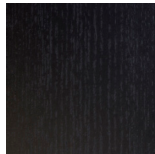


FINISHINGS

ASH



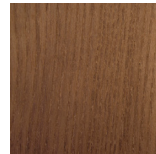
NATURAL



BLACK



WHITE



WALNUT STAINED



CHESTNUT STAINED

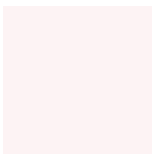


RED



GREEN

POWDER COATED METAL



WHITE



BLACK

MAT PLASTIC



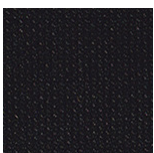
RED - RAL 3020



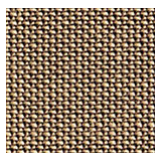
BLACK - RAL 8022

FABRIC UPHOLSTERY

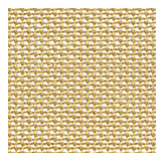
ROHI TOPIA



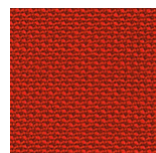
EBONY



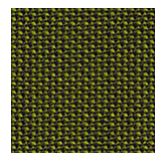
WALNUT



MOON



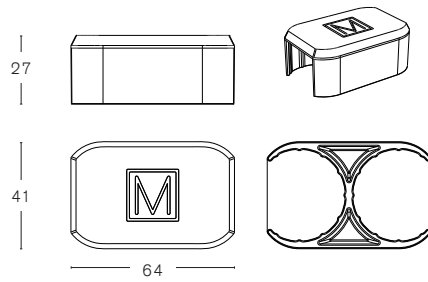
CHILI



PALM

TRONCO CONNECTOR

design by SAM HECHT / INDUSTRIAL FACILITY



TECHNICAL INFORMATIONS

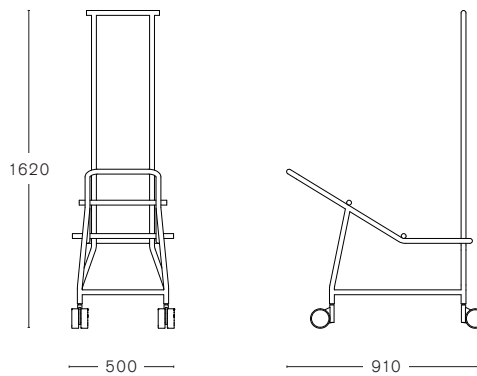
ROW CONNECTOR



PLASTIC PA6 + 30% GLASS FIBER

GROSS WEIGHT
CA. g 30

TRONCO DOLLY



TECHNICAL INFORMATIONS

MAX. PER BOX	GROSS WEIGHT	VOLUME	BOX SIZE
1 DOLLY	CA. kg 25,00	1,00 m ³	1000 × 600 × 1650 mm

FINISHINGS

MAT PLASTIC

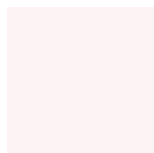


RED - RAL 3020



BLACK - RAL 8022

POWDER COATED METAL



WHITE



BLACK